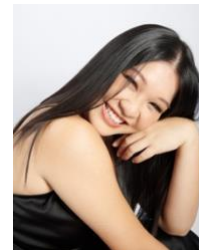


PUNYANUCH PORNSAKULPAISAL "MIND"

Punyanuch “Mind” Pornsakulpaisal **currently based in NYC**

Heights: 5’3
Phone: 617 283 6585
Instagram: mindyppmind
Range: Db3 - C6

Email: ppornsakulpaisal@gmail.com
Website: www.punyanuchofficial.com
Facebook: Mind Pornsakulpaisal
Vocal Type: Soprano/Belter



NATIONAL TOUR

Summer: The Donna Summer Tour Michael/Maid Apex Touring

REGIONAL THEATER

<i>Elephant & Piggie’s, “We Are in a Play”</i>	<i>Piggie</i>	Yocum Theatre
<i>Dames at Sea</i>	<i>Joan</i>	Mississippi Bend Players
<i>James and the Giant Peach</i>	<i>Spider</i>	Hub City Players
<i>I Love a Piano</i>	<i>Ginger</i>	Carey Dining Theatre
<i>Schoolhouse Rock</i>	<i>Dori</i>	Carey Dining Theatre
<i>The Polar Express Train Ride</i>	<i>Steward</i>	Rail Events Productions/Warner Bros
<i>Faust</i>	<i>Ensemble</i>	Natchez Festival of Music
<i>Turandot</i>	<i>Handmaiden</i>	Mississippi Opera

INTERNATIONAL CREDITS

<i>Love Game, the Musical</i>	<i>Rada (c)</i>	Be Musical, Thailand
<i>Suntaraporn, the Musical</i>	<i>Ensemble</i>	JSL Global Media, Thailand

UNIVERSITY MAINSTAGE PRODUCTION

<i>The Drowsy Chaperone</i>	<i>Janet Van De Graaff</i>	Southern Opera & Musical Theatre Co.
<i>Her Naked Skin</i>	<i>Mrs.Schlieffe/Quartet Lead</i>	Boston Conservatory at Berklee
<i>Thoroughly Modern Millie</i>	<i>Bun Foo (guest artist)</i>	William Carey University
<i>Sondheim Remix</i>	<i>Soloist</i>	Boston Conservatory at Berklee
<i>Beyond Boundaries Cabaret</i>	<i>Soloist</i>	Boston Conservatory at Berklee
<i>Phantom of the Opera</i>	<i>Confidante (c)</i>	Southern Opera & Musical Theatre Co.

SPECIAL APPEARANCE

<i>Super Secrets Arts Cabaret</i>	<i>Guest Artist</i>	Super Secrets Arts (Brooklyn)
<i>Mississippi Bicentennial Concert</i>	<i>Chorus/Dancer</i>	Mississippi State Office
<i>Magic of the Musical Stage</i>	<i>Soloist</i>	Southern Opera & Musical Theatre Co.

FILM, TELEVISION, AND COMMERCIAL

<i>Med School Coach Commercial</i>	<i>Student</i>	Southend Digital, Boston
<i>Spotless</i>	<i>Detective Monroe</i>	Sacred Heart University

EDUCATION & TRAINING

MFA in Musical Theater, Boston Conservatory at Berklee
Bachelors: BA in Music (Voice) at USM (Southern Mississippi) & BFA in Communication Design at MUIC (Thailand)
Voice: Classical, Pop, Jazz, Musical Theater, Traditional Thai
Acting/Speech: Meisner Technique, Alexander Technique, Basic Intimacy Work
Dance: CSTD modern dance certified, Jazz, Ballet, Thai Traditional, Hip Hop, Basic Tap

SKILLS & INTERESTS

Certified baker, Graphics and Promotional Designs, Painting, Auto & Manual Driving and Motorcycling, Volleyball, Guitar, Read Music, Sight Reading, Fluent in Thai and English, Conversational in Chinese

AWARDS: 1st Place, John Alexander Competition (Mississippi Opera Young Artist Competition), 2nd Place, Steinway Competition Gulf Coast Steinway Society (Musical Theater), 3rd Place, Southern Regional NATS (Older Men and Women in Undergraduates)